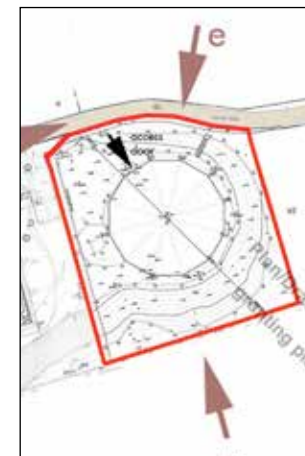


> **PLOT WITH PLANNING PERMISSION**
HEUGH RESERVOIR CI36 (II)
NORTH BERWICK
EAST LOTHIAN
EH39 5NP

A UNIQUE DEVELOPMENT OPPORTUNITY WITH
EXISTING PERMISSIONS FOR LARGE 5 BEDROOM
HOME, OR YOU MAY HAVE OTHER IDEAS?

HEUGH RESERVOIR - THE SITE



HEUGH RESERVOIR - THE APPROACH



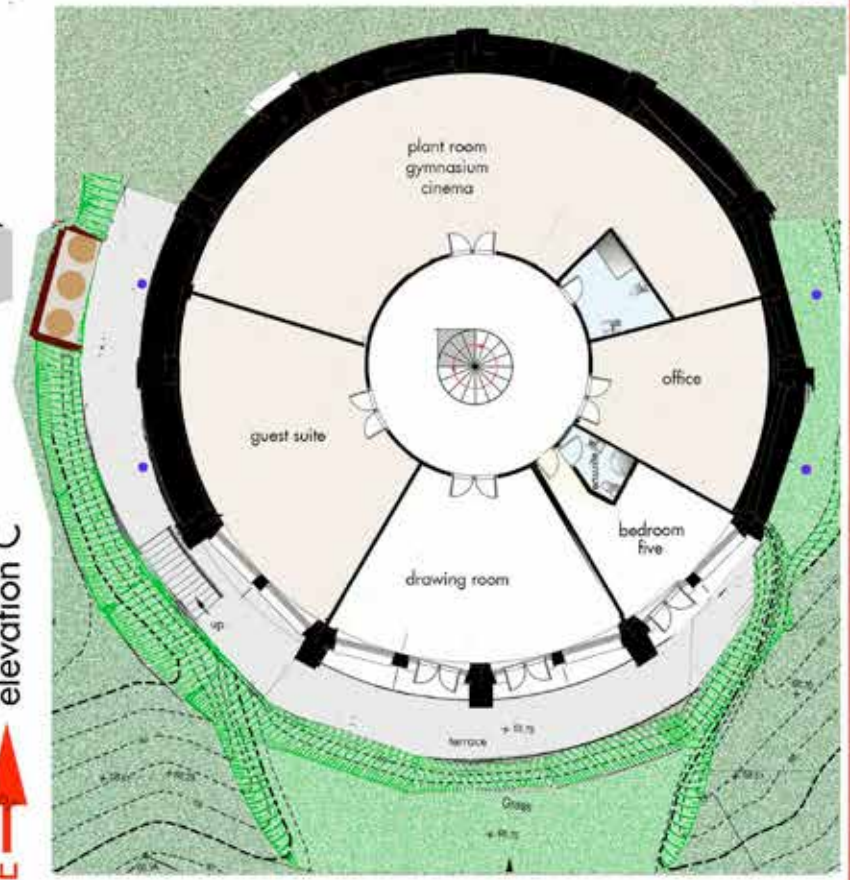
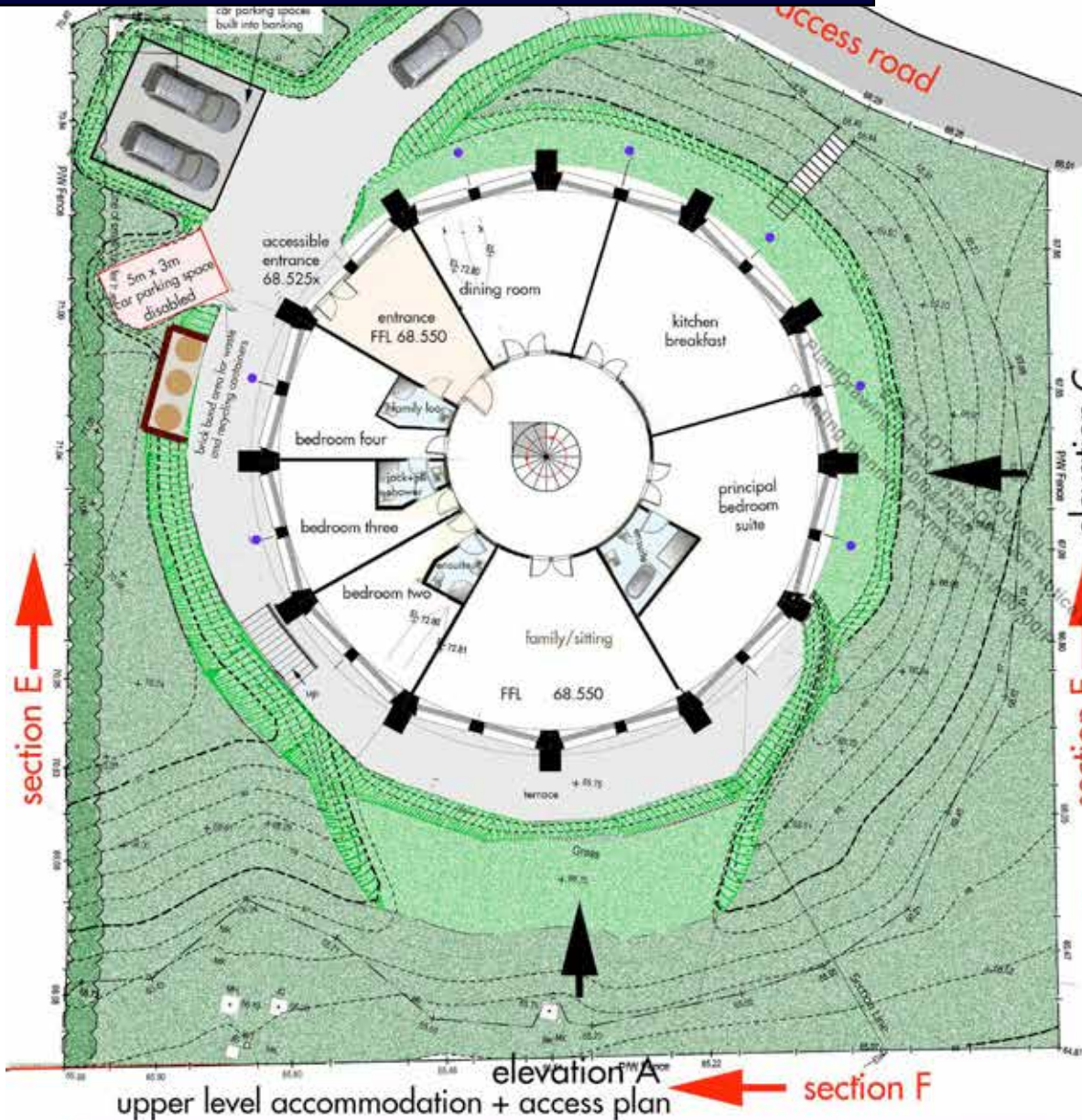
HEUGH RESERVOIR - SUPERIMPOSED ELEVATIONS



elevation B

A1 paper plan size

HEUGH RESERVOIR - FLOOR PLAN PROPOSAL



lower level accommodation + cellar plan

scale 1:100

Rev C 20191203 Contours added

Rev B 20190821 Stair going, rise and position revised

Staircase handrail added

floor plan proposals

- excavated ground - banking diagrammatic
- excavated ground - levelled
- existing ground levels
- safety glazed "sun pipes"

DB Development Company

Restoration + Conversion of Redundant Water Reservoir to Residence with Office The Heugh North Berwick EH39 5NP

scale 1:100

drawn TMP - 20190130

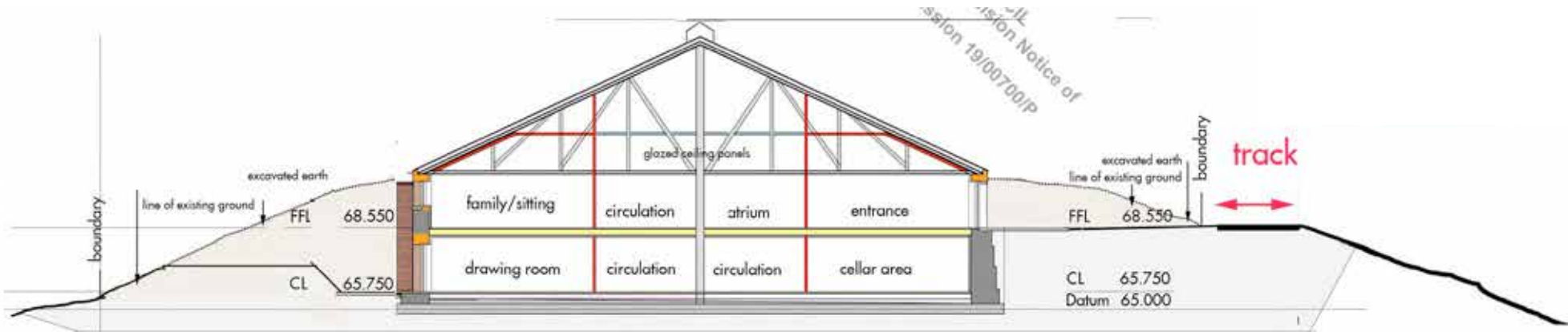
DB Development Company

PYEMONTDESIGN
greenarchitecture

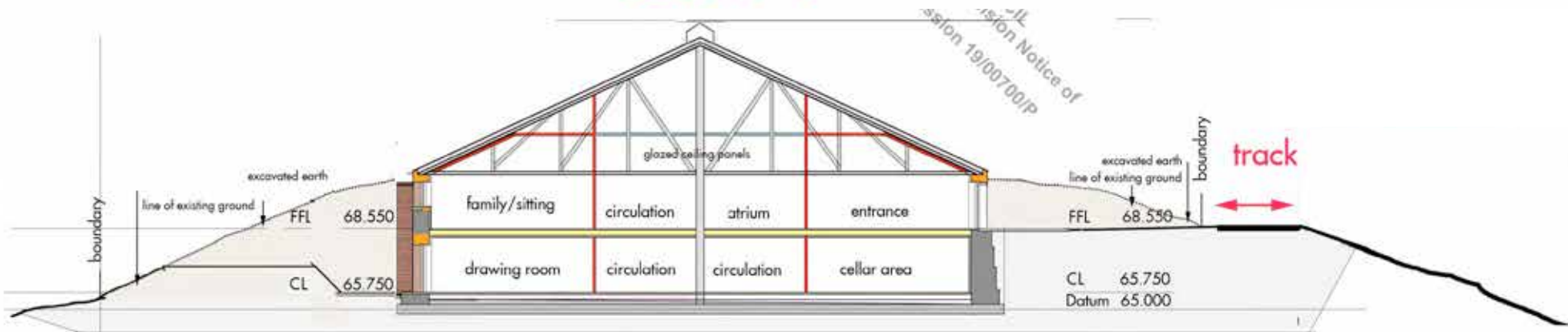
747.11c

20190624

HEUGH RESERVOIR - SECTIONS PROPOSAL



section F - F

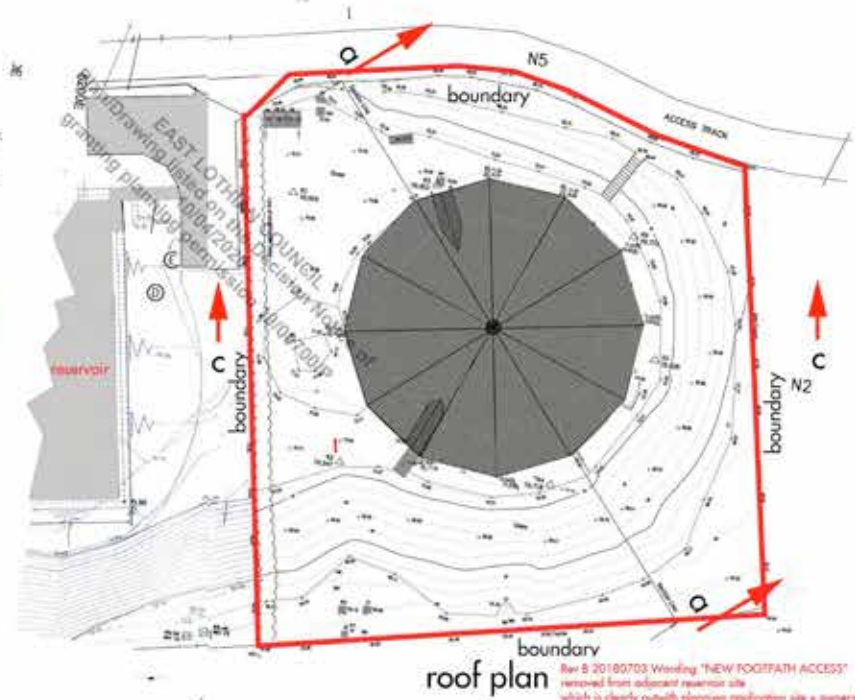
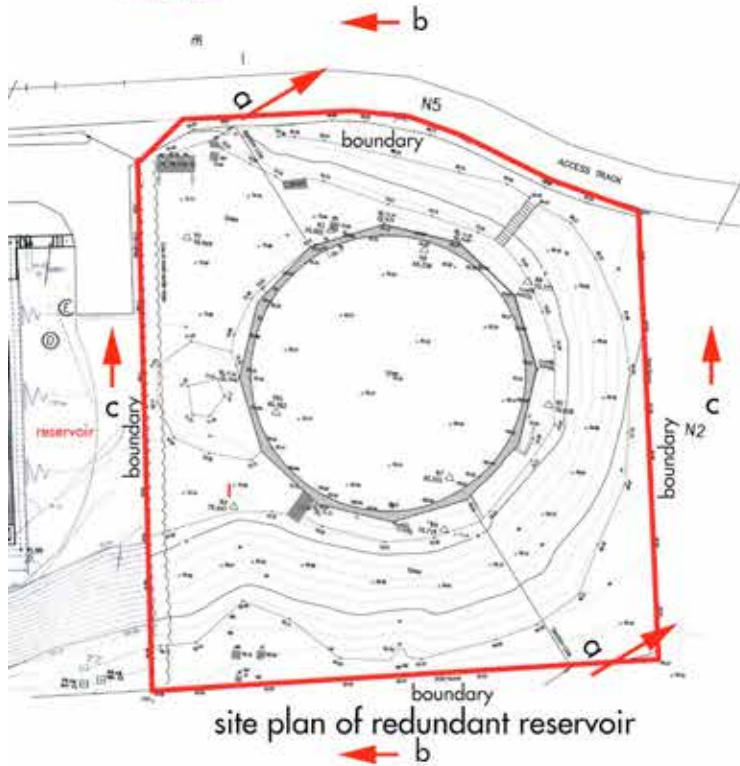
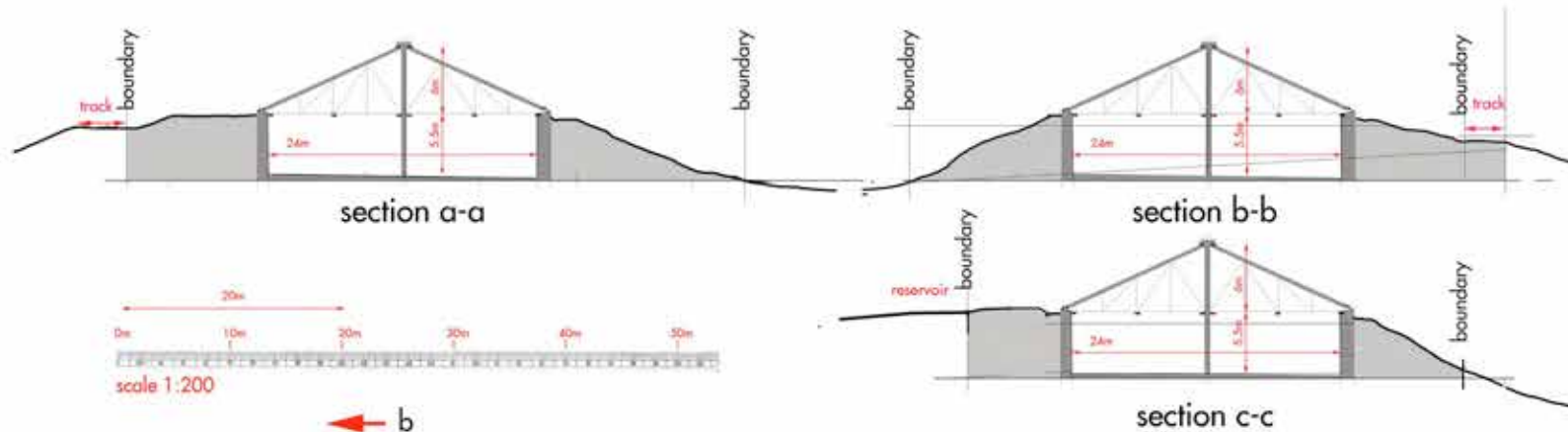


section F - F



scale 1:100

HEUGH RESERVOIR - SECTIONS PROPOSAL



Rev B 20180703 Working "NEW FOOTPATH ACCESS" removed from adjacent reservoir site which is clearly outwith planning application site + general as required by David Allan EIC

Rev A 20180613 Working "DO NOT SCALE" removed Boundary line corrected AS to suit EIC

Rev C 20191203 Contours added to Roof Plan